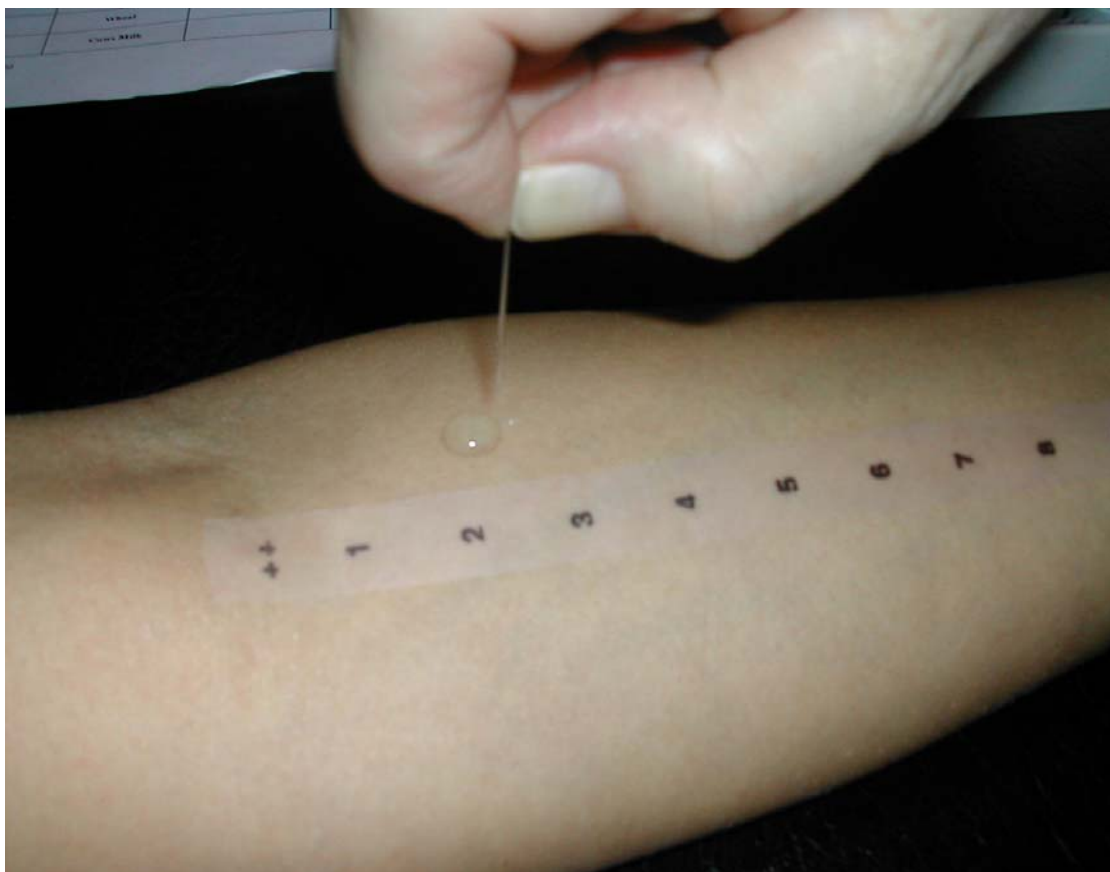


Skin Prick Tests for Allergy

This test is done by placing a drop of a solution containing a possible substance that can cause allergy (allergen) on the skin, and a series of scratches or needle pricks allows the solution to enter the skin. If the skin develops a red, raised itchy area (called a wheal), it usually means that the person is allergic to that allergen. This is called a positive reaction.

The test substances (allergens) include house dust mites, grass and tree pollens, fungal moulds, animal hairs such as cats, dogs, horses, dairy products as well as other substances. The choice of substances used in the test depends on the history obtained from the patient.



The Skin Prick Test